

# Bond Program + Facilities Planning

---

FLEX Week – January 2020

John O. White, Executive Director – Bond Program and Facilities Planning

Robert Rauscher, Associate Program Manager - Bond Office

# Facilities Master Plan Approved

## Looking forward to Spring 2020

---



# 2030 Vision: Facilities Master Plan (FMP)

---

- Required for California Community Colleges: the FMP addresses current and future facility needs on a districtwide basis
- Provides a vision for the future state of academic and support services space, buildings and overall capital improvements and a framework for continuous planning.
- Includes projects recently constructed and those that will be made possible with the passage of Bond Measures “B” and “CC” consistent with the District priorities and the Educational Master Plan.

# 2030 Vision: Facilities Master Plan (FMP)

---

- Approved by Board of Trustees during October 2019
- Endorsed by Academic Senate, College Planning Council, Facilities Advisory Committee, Facilities Master Plan Task Force
- Marks the end of a two-year process that included faculty and students
- Provides up-to-date information on District growth and newest facilities

# Highlights from Facilities Master Plan

---

- A summary is available on COD Bond Program and Facilities Planning webpage at:

<http://collegeofthedesert.edu/community/facilityplan/Pages/default.aspx>



- Living document that is a planning tool that the District will use for long range facilities development
- FMP can be amended or updated (typically every 5–10 yrs.)

# Palm Springs Development Project

---



# Palm Springs Development Project

---

- 27 acre site located in Palm Springs between downtown and airport
- Physical Site Plan and high level space plan “fit test” underway
- Studies targeted to be completed this Spring
- Targeting public use of facilities in 2023 or 2024

# Palm Springs Development Project

---

Guiding Principles: desired physical planning outcomes and criteria

- Context
- Connectivity
- Flexibility and Adaptability
- Facilities and Open Spaces
- Design Character and Heritage
- Capacity and Density
- Access and Mobility
- Climate Smart Design
- Community Health and Wellness



# Palm Springs Development Project

---

## Features

- Innovative spaces
  - Open and flexible environments including experiential labs and maker space (high tech accelerator) that will enhance student success
- A sustainable philosophy that can feature best practice technologies and stewardship of scarce resources
- A transportation hub to accommodate bike, bus, electric and shared vehicles integrated with local and regional transportation networks
- Welcoming, safe and accessible environment

# Palm Springs Development Project

---

## Signature Programs and Facilities

- Maker Space/Accelerator Space
- Hospitality and Tourism (hotel, restaurant, culinary and event space)
- Digital Media and Broadcasting
- Center of Excellence for Healthcare Education (wellness, fitness, nutrition)
- Sustainability: best practice technologies, energy production, energy management and monitoring and stewardship of scarce resources
- Will also inform practical learning and work experience, and will be a demonstrable feature of the new Palm Springs site

# Palm Springs Development Project

---

- Delivery of facilities will be aligned with District priorities and resource availability
- The Project will make use of Measure CC Bond funding and other resources for special programs, activities, and facilities

# HILB & C BUILDING

---

Originally Constructed in the early 1960's

2 ½ Stories: 41,587 Square Feet

Basement: 8,846 Square Feet

First Floor: 15,394 Square Feet

Second Floor: 17,347 Square Feet

The Library and Learning Resource Center will include Library Operations, Computer Labs, Multiple Student Study Rooms and Open Study Areas.

The renovation efforts included filling in a portion of the second floor to increase the total square footage allowing more program and study space.

This project relocates the library from the shared Multi-Agency Library and brings it back to the center of campus where it becomes a beacon of light for our students.

The renovation of the "C" building will finally provide a home for the Board of Trustees.

This building will also house Administrative Offices and Conference room space.

# HILB & C BUILDING





# CENTRAL CAMPUS QUAD

---

Renovation of the Central Campus Quad started in the spring of 2019.

It is located between the Administration Building to the South, Liberal Arts to the North and the Hilb Building to the East.

This project demolished the entire quad area, including the Fountain of Knowledge, along with all associated utilities.

The newly renovated Quad will have an updated Fountain of Knowledge, ADA Accessible Concrete Flatwork, new Palm Trees and new Landscaping,  
The new Palm Trees and the new Fountain of Knowledge both will have lighting associated.  
There will be a new Irrigation System and Vault, housing the new fountain equipment.

# CENTRAL CAMPUS QUAD



# ATHLETICS

---

## FIELD HOUSE & ATHLETIC SUPPORT

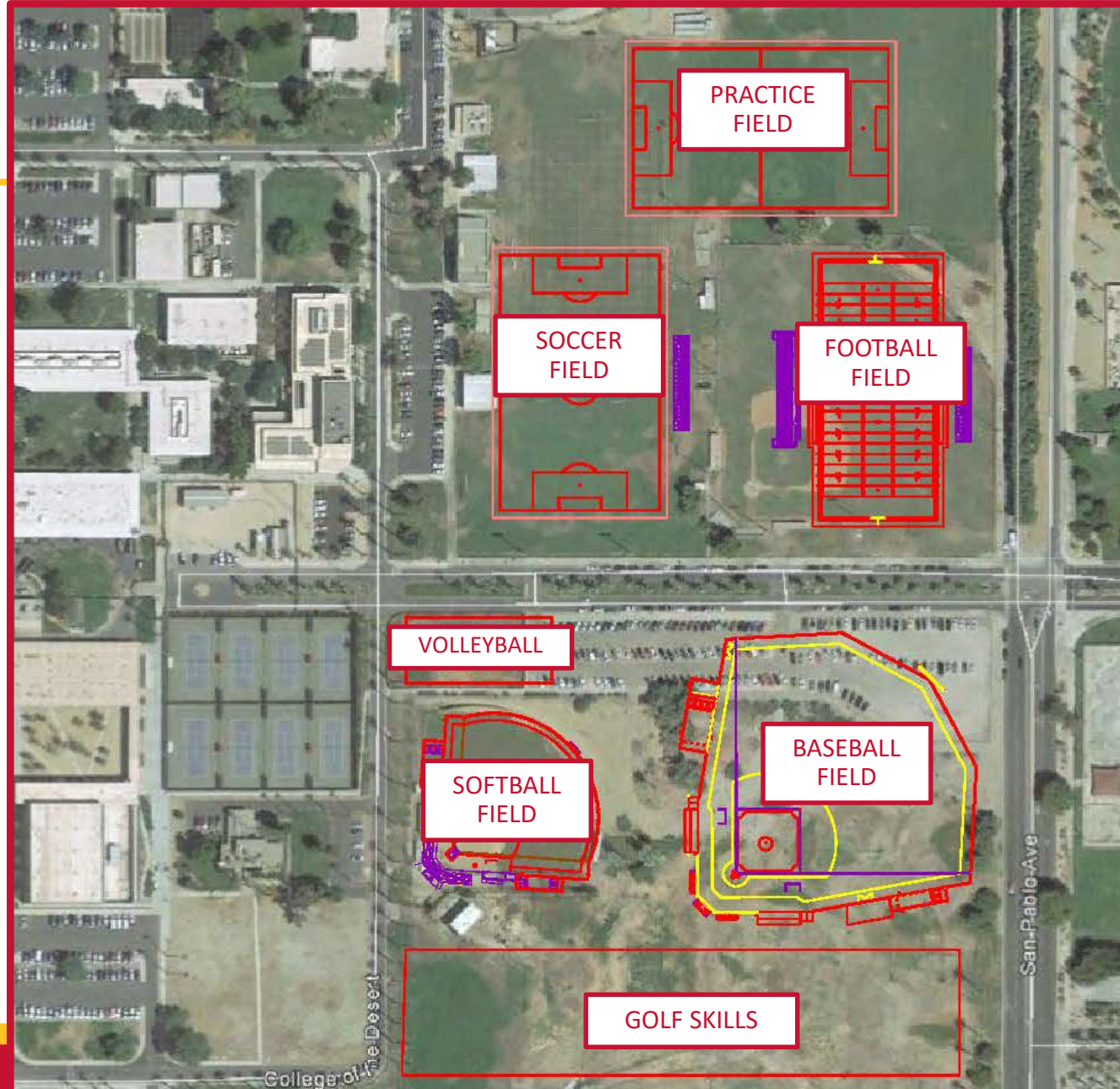
A new Athletics Complex is proposed to replace the current facilities.

The current stadium no longer meets the needs of the College.

The current complex lacks appropriate support spaces and does not serve student athletics well. The new complex includes a new football stadium, sand volleyball courts, golf skills laboratory (outdoor), soccer, baseball, and softball fields. A centralized weight room and concessions are also recommended.



# ATHLETICS



# INDIO CAMPUS EXPANSION

---

The scope of this project includes a new 3 story, 67,000 Square Foot building and the 10,000 Square Foot renovation of the existing building classroom building. A large Parasol will also be constructed between the new and existing building. Under the Parasol will be shaded space for potential outdoor programs.

Program space in the new building will consist of the following:

- Student Success Space
- Maker Space
- Lecture Halls
- Student Health Services
- Student Dining Commons
- Classrooms
- Computer Labs
- Study Spaces
- Faculty Offices
- Public Safety
- Science Laboratories

Renovation of the existing building include the removal of existing campus functions that will be relocated to the new building, allowing the renovation work to take place.

Site improvements include parking, landscape buffers and vehicular circulation for the new enlarged campus extents.



# INDIO CAMPUS EXPANSION



# INDIO CHILD DEVELOPMENT CENTER

---

The Child Development Center at the Indio Campus extends the campus site south of the existing building with the addition of a new 17,000 square foot building and approximately 7,000 square feet of Play Yards with shade structures. The new building will include toddler & preschool classrooms, 2 of each, and support spaces required for a state of the art child care facility, meeting State Chancellor's guidelines. The building will also house an adult ECE classroom and observation spaces. Site improvements include undergrounding of existing overhead utilities, demolition of existing structures and new parking lots.

This project just completed Schematic Design and is now entering into Design Development. The project is scheduled to be complete by Summer of 2022.



# INDIO CHILD DEVELOPMENT CENTER



# ROADRUNNER MOTORS

---

The new Automotive Technology Training Center facility will be constructed on a 5.8 acre parcel in Cathedral City, and will provide specialized and generalized classrooms, teaching laboratories including service vehicle bays/lifts, offices, conference rooms, support space, and parking. The initial effort will involve programming, site planning, and schematic design, as well as master planning the site for future development.

The Design Professional is currently being reviewed and will commence the Programming Efforts soon.



# ROADRUNNER MOTORS



# PALM SPRINGS CAMPUS

---

The demolition phase removed the existing 330,000 square foot building and all associated footings and underground utilities. This is to clear the way for construction of the new campus.

All concrete associated with the demolition effort remains on the site for dust control



# PALM SPRINGS CAMPUS



# Questions or Comments?

---

- Your time to ask...